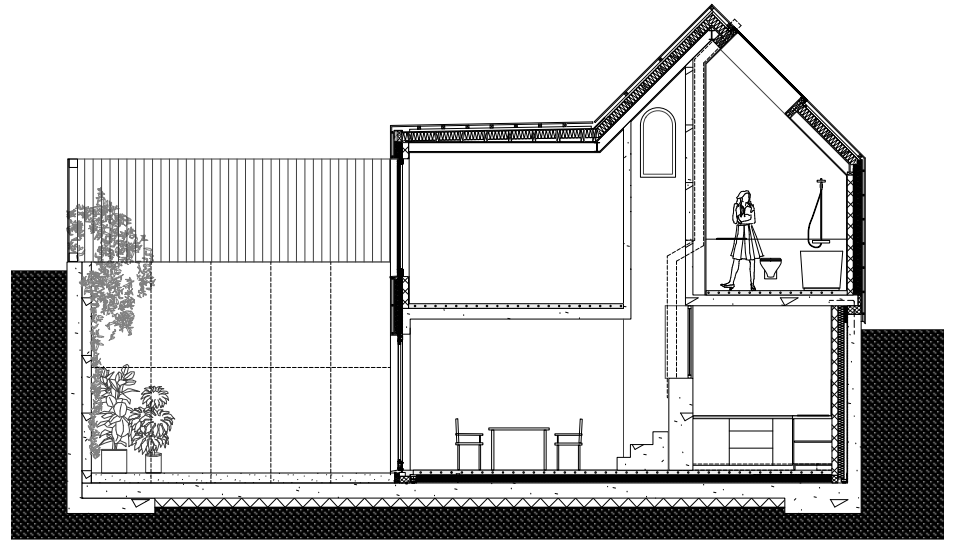


**Below**

Location plan; basement, ground floor and roof plans; cutaway axonometric.



**Key**

- 1 Pre-weathered chestnut cladding
- 2 Single-ply membrane
- 3 Concrete blockwork
- 4 Painted steel reveals
- 5 120mm rigid insulation
- 6 Chestnut cill
- 7 Clay plaster finish
- 8 Exposed in situ concrete structure
- 9 Painted timber-framed glazing
- 10 In situ concrete retaining wall
- 11 Polished concrete screed
- 12 Decorative pebbles
- 13 Gravel stabilisation grid

