

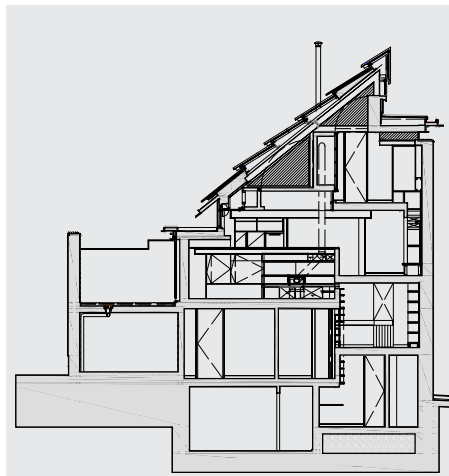
## Key

- 1 Entrance hall
- 2 Study
- 3 Bedroom
- 4 Garage
- 5 Utilities/services/storage
- 6 Living room
- 7 Dining room
- 8 Kitchen
- 9 Terrace garden



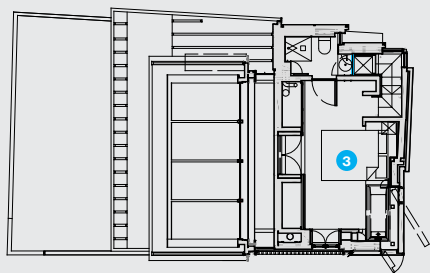
## Above

Location plan. The house occupies a footprint of 11x6 metres and has a floor area of 165 square metres. The site formed part of a garden to a basement apartment on the adjacent Forth Street.

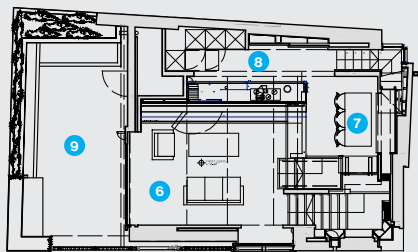


## Right

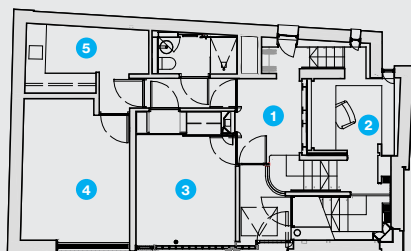
Section.



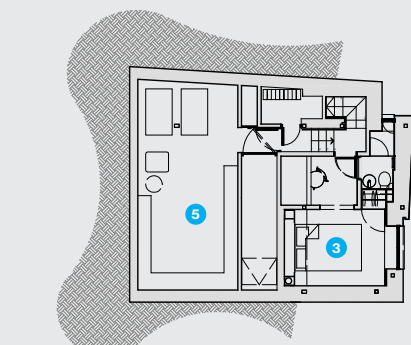
## Second floor



## First floor



## Ground floor



## Basement