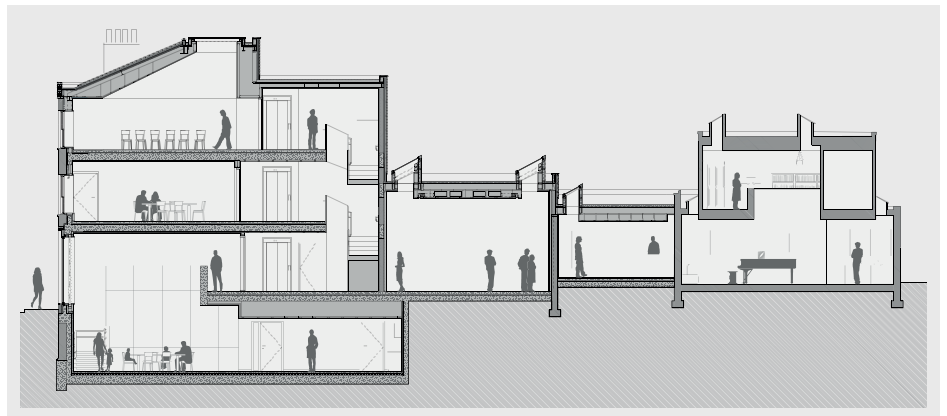
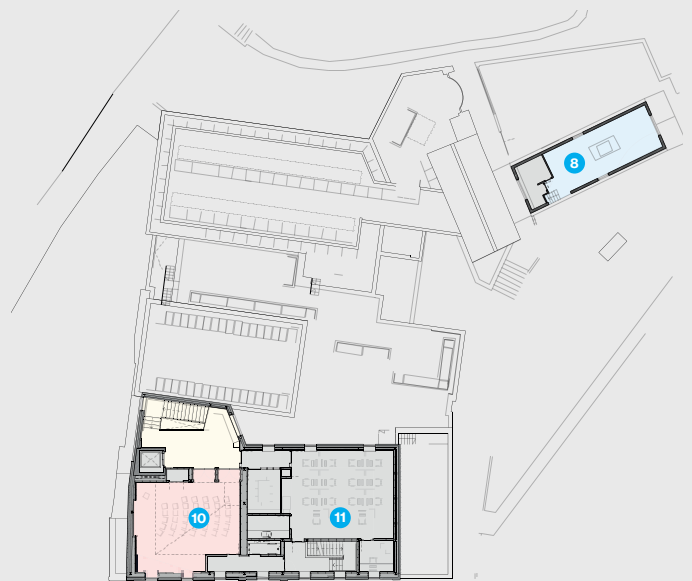


Key

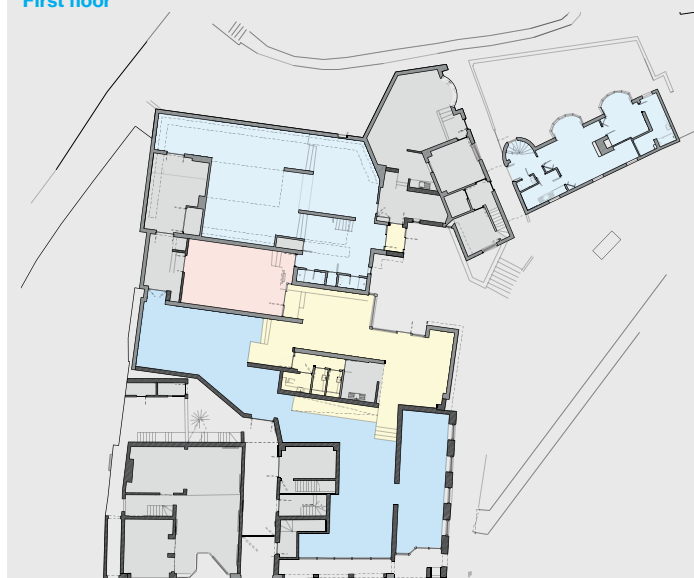
- 1 Entrance
- 2 Shop
- 3 Gallery 1
- 4 Gallery 2
- 5 Education wing
- 6 House extension
- 7 Cafe
- 8 Original house
- 9 Project space
- 10 Learning room
- 11 Office



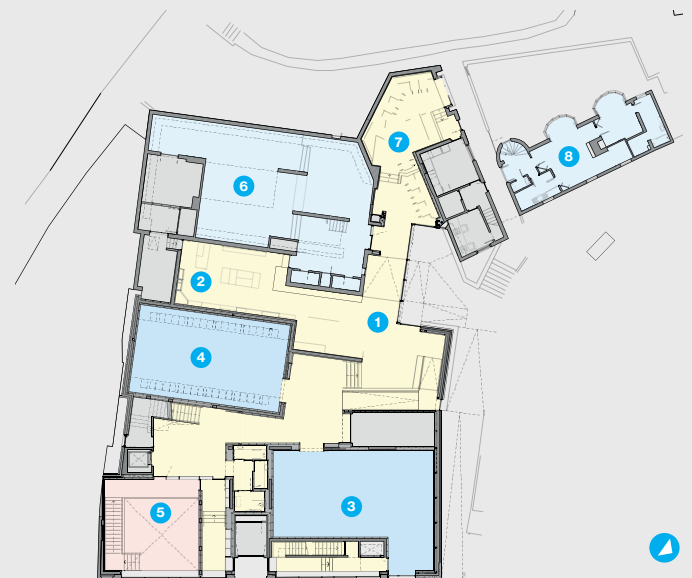
First floor



Second floor



Ground floor 'before'



Ground floor

Below

The original three-bay cottage was substantially extended in the 1970s by Leslie Martin and David Owers, and again in 1980. A further Martin extension, in 1982, reached to Castle Street, and in 1994 this was modified, and other adjustments made, by Bland Brown & Cole.

