

Right

Development of the house over time. The site is screened from the street by a planted mound, which has been enlarged in the recent renovation, with gates added.

A small building immediately behind was originally a carport and boiler house, but was later converted for use as a studio. It now provides sleeping accommodation for resident GSD Fellows, and two en-suite bathrooms have been added.

Bedrooms had been added to the main house by its most recent resident, Ab Rogers, along with a studio building in the rear garden. These have both been removed to return the house and grounds to an earlier form.

Below

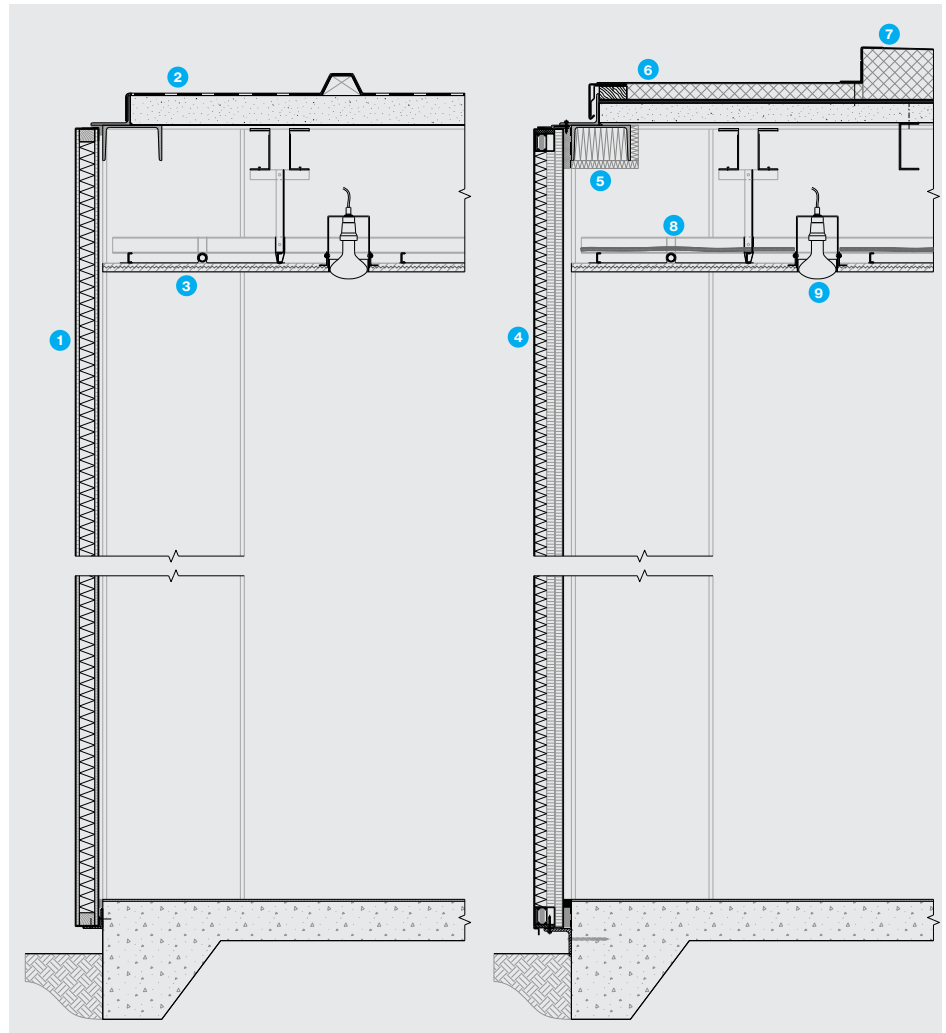
Detail sections showing the original 1968 design for cladding panels and roof, and those done in 2017.

Alterations in the 1980s and 90s added insulation and bitumen felt to the roof.



Key

- 1 Two-inch-thick Alcoa wall panels – aluminium-faced with Asbestolux lining and polyurethane insulated core, with neoprene 'zip' gasket joints and PVC finish inside and out
- 2 Three-inch channel-reinforced wood-wool roof deck with bitumen felt
- 3 Suspended heated ceiling system
- 4 75mm-thick wall panel – PPC aluminium sandwich of rigid insulation and fibreboard
- 5 Insulation bonded to steel U-section to deal with existing cold bridging
- 6 New two-inch wood-wool roof deck fixed to new C-section trimmers
- 7 Rigid Kingspan Optim-R vacuum insulated panel covered with PIR insulation and single-ply membrane
- 8 Aluminium foil blanket over original heated ceiling system
- 9 New light fittings to match 1968 concealed ceiling reflector lamps



Right

Axonometric view detailing the works. Cold bridging at the gable portals has been remedied with foam insulation. The unusual industrial heating system, with pipework in the ceiling, was refurbished. All seals were renewed but full air-tightness was not pursued to avoid condensation.

Key

- 1 Structure of welded rigid RSJ portals
- 2 White polyurethane floor, cleaned and waxed
- 3 Aluminium-foil blanket over original suspended heated ceiling and new flush ceiling lights
- 4 New reinforced wood-wool slabs to match original
- 5 New rigid vacuum insulated panels covered with PIR insulation and single-ply roofing membrane
- 6 New EPDM-sealed double-glazed roofs
- 7 Redecorated steel glazing mullions
- 8 Redecorated double glazing and sliding doors
- 9 New aluminium-faced wall panel, designed to match the original, with a 'zip' jointing system
- 10 Refurbished aluminium-framed glazed doors, windows and vents
- 11 Restored pod containing bathroom, WC, shower cubicle, laundry and bunk beds
- 12 Restored and redecorated island
- 13 Restored fixed and full-height sliding partitions

