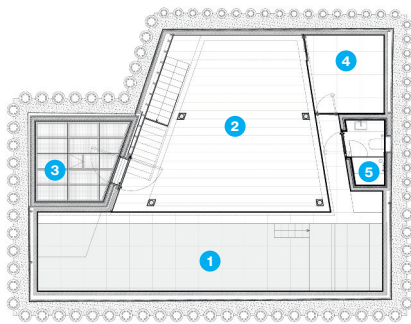


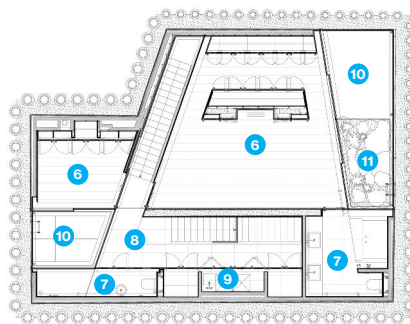
Below

Sub-basement, basement and ground-floor plans; sections. On a plot of 256 square metres, the house has a gross internal area of 253 square metres.

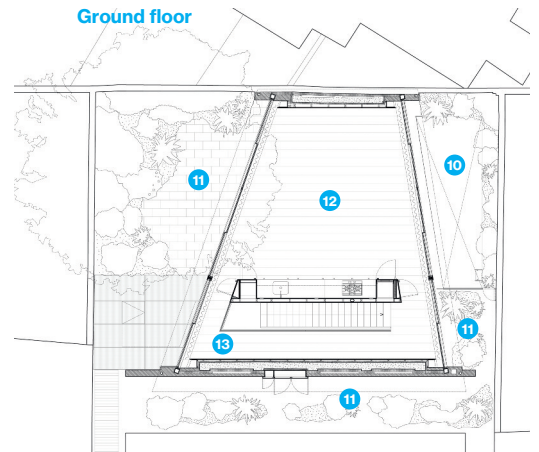
Sub-basement



Basement



Ground floor



Key

- 1 Pool
- 2 Gallery
- 3 Plant
- 4 Yoga studio
- 5 Steam room
- 6 Bedroom
- 7 Bathroom
- 8 Hall
- 9 Utility
- 10 Lightwell
- 11 Garden
- 12 Living room
- 13 Entrance hall

