

Right

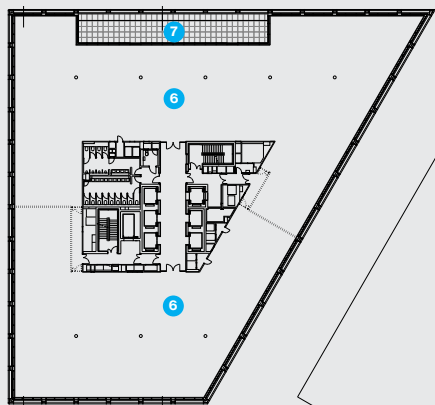
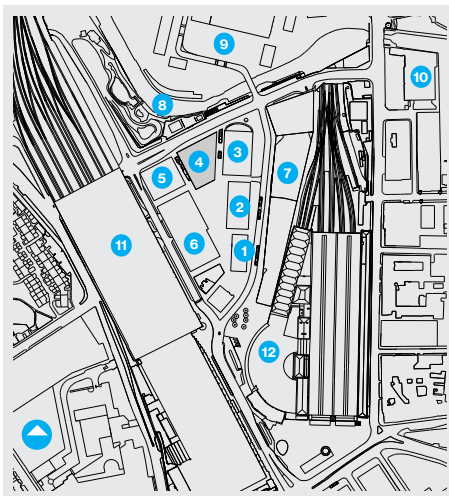
Location plan, reception cafe, rooftop terrace and long-span vierendeel truss across the southerly entrance. Key:
1 One Pancras Square (David Chipperfield Architects), 2 Two Pancras Square (Allies & Morrison), 3 Three Pancras Square (Porphyrios Associates), 4 Four Pancras Square (Eric Parry Architects), 5 Five Pancras Square (Bennetts Associates), 6 Six Pancras Square (Wilmutte & Associés), 7 Google HQ (forthcoming, BIG/Heatherwick Studios), 8 Regent's Canal, 9 Granary Square, 10 King's Place, 11 St Pancras International, 12 King's Cross station.

Below

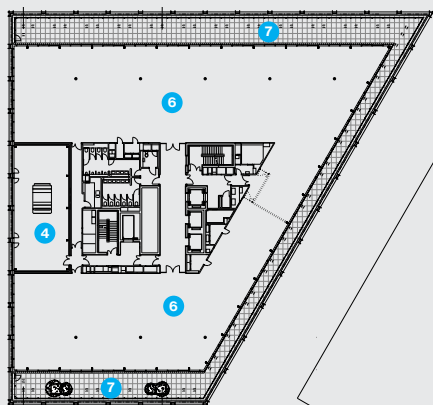
Floor plans.

Key

- 1 Office reception, cafe
- 2 Lift lobby
- 3 Retail
- 4 Plant
- 5 Cycles with adjacent shower room
- 6 Office
- 7 Terrace
- 8 Roof garden



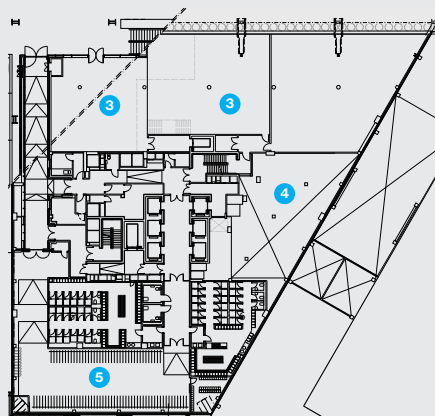
Sixth floor plan



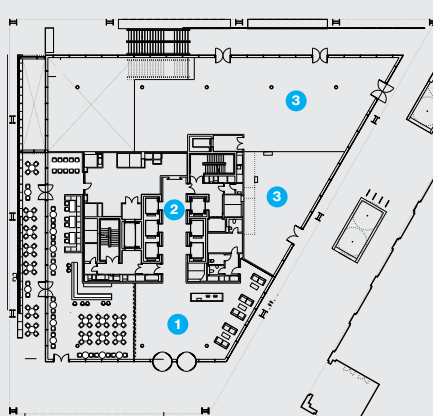
Tenth floor plan



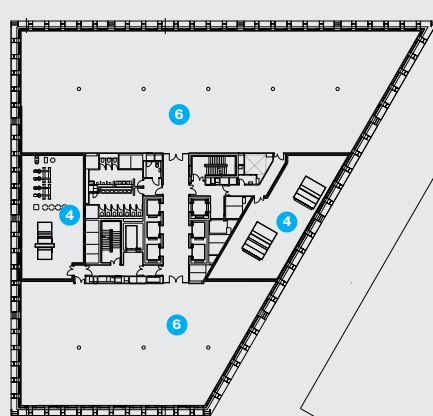
Roof plan



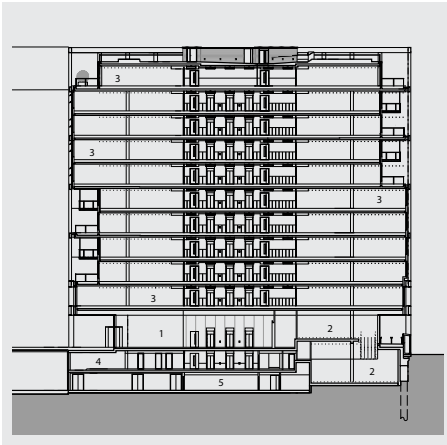
Lower ground floor plan



Ground floor plan



First floor plan



Above
Section.

Right

The facades comprise an expressed weathering steel structural frame with a unitised PPC curtain wall behind. Glazed white ceramic is used for upper floor brise soleil and balcony fascias. The weathering steel panels are not structural beams, but help tie the corner piers. Rainwater is back-drained off the panels and vierendeel truss to an external ring drainage system routed behind the piers to minimise and capture run off. The piers all have drainage grilles at the base to prevent run off to the public realm paving.

A bespoke fire engineering strategy, developed by Trenton Fire, protects the steel frame by introducing steel plates on the back of the vierendeel truss and inserting T-sections within the external piers.

Key

- 1 Weathered steel structural pier
- 2 Weathered steel panel
- 3 Extruded glazed terracotta brise soleil panel
- 4 Full-height glazing
- 5 Structural glazed parapet with vitreous enamel handrail
- 6 Aluminium ceiling cladding
- 7 Terrazzo paving
- 8 Inverted roof system
- 9 Landscaped roof
- 10 Weathered steel vierendeel truss

