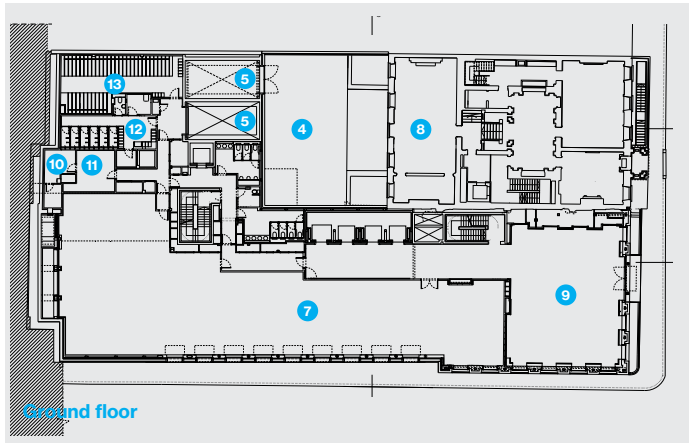


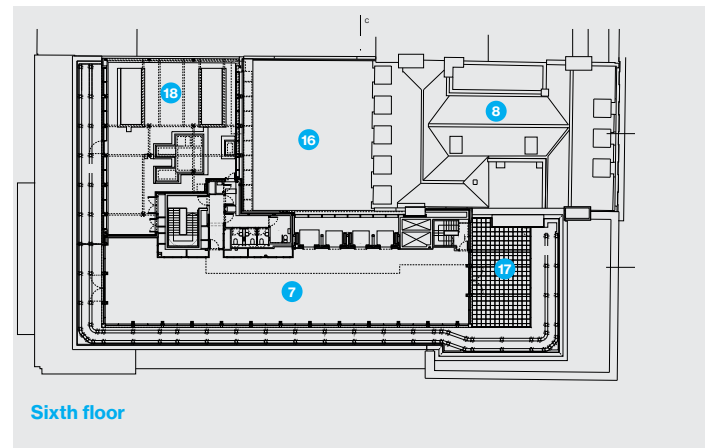
First floor

Key

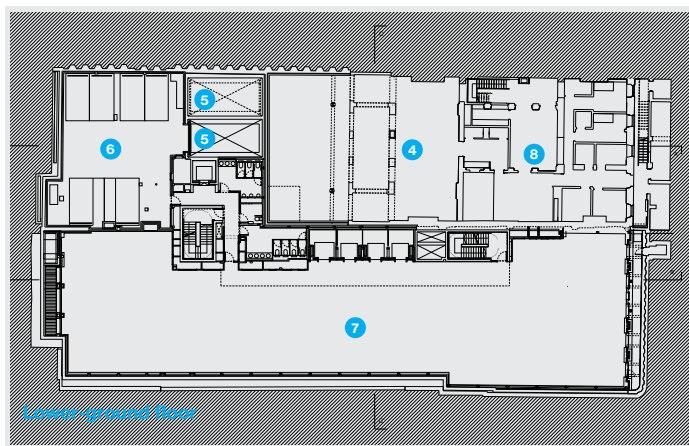
- | | |
|-------------------------------------|---------------------------|
| 1 Plant | 10 Incoming services room |
| 2 Store | 11 Fire control room |
| 3 Bin area | 12 Showers/changing |
| 4 New basement to existing building | 13 Bicycle parking |
| 5 Car lift | 14 Substation |
| 6 Office car park | 15 Loading bay |
| 7 Office | 16 Courtyard |
| 8 Existing building | 17 Terrace |
| 9 Reception | 18 Roof |



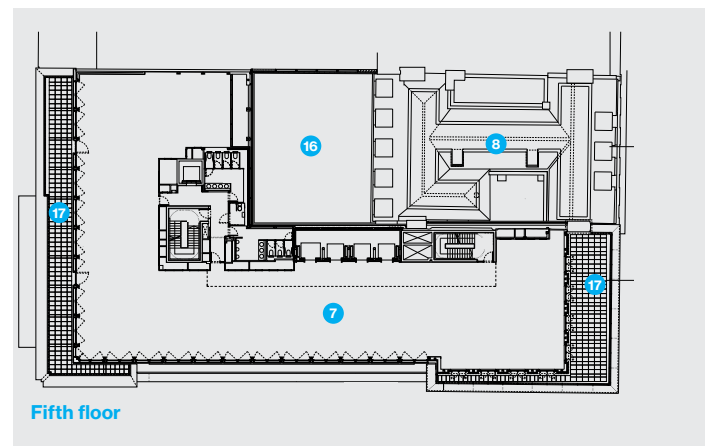
Second floor



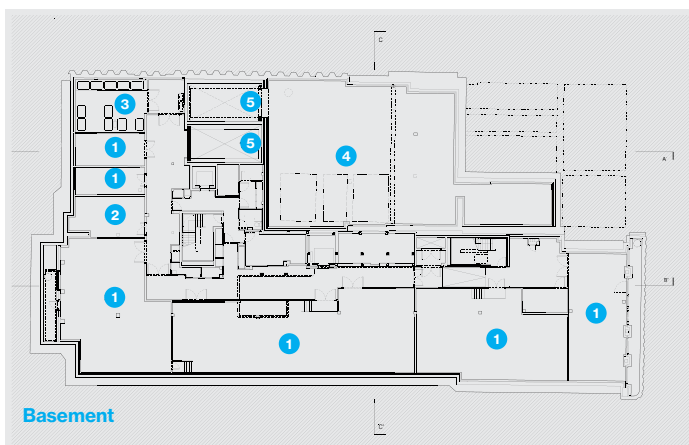
Sixth floor



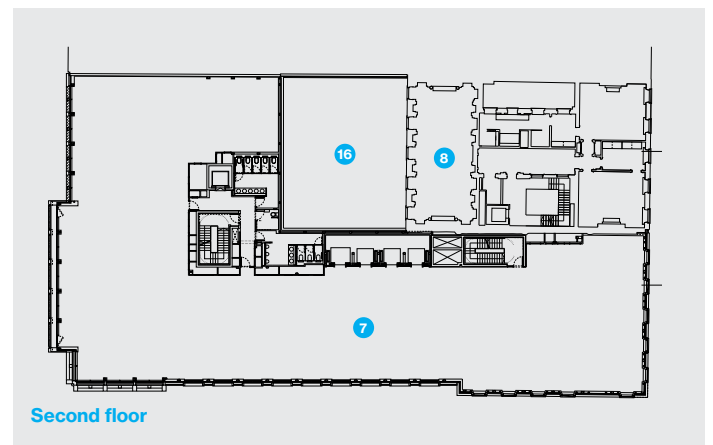
Lower ground floor



Fifth floor



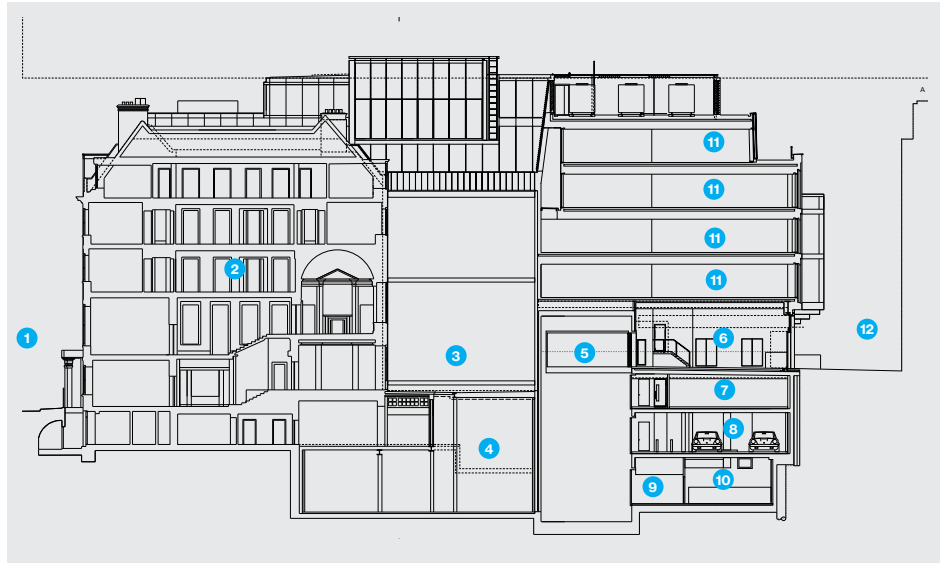
Basement



Second floor

Key

- 1 St James's Square
- 2 7 St James's Square
- 3 Courtyard
- 4 New basement
- 5 Car lift
- 6 Loading bay
- 7 Changing/showers
- 8 Car park
- 9 Corridor
- 10 Plant
- 11 Office
- 12 Apple Tree Yard



Above
South-north section through the existing 7 St James's Square, its new courtyard and the rear of 8 St James's Square facing onto Apple Tree Yard.