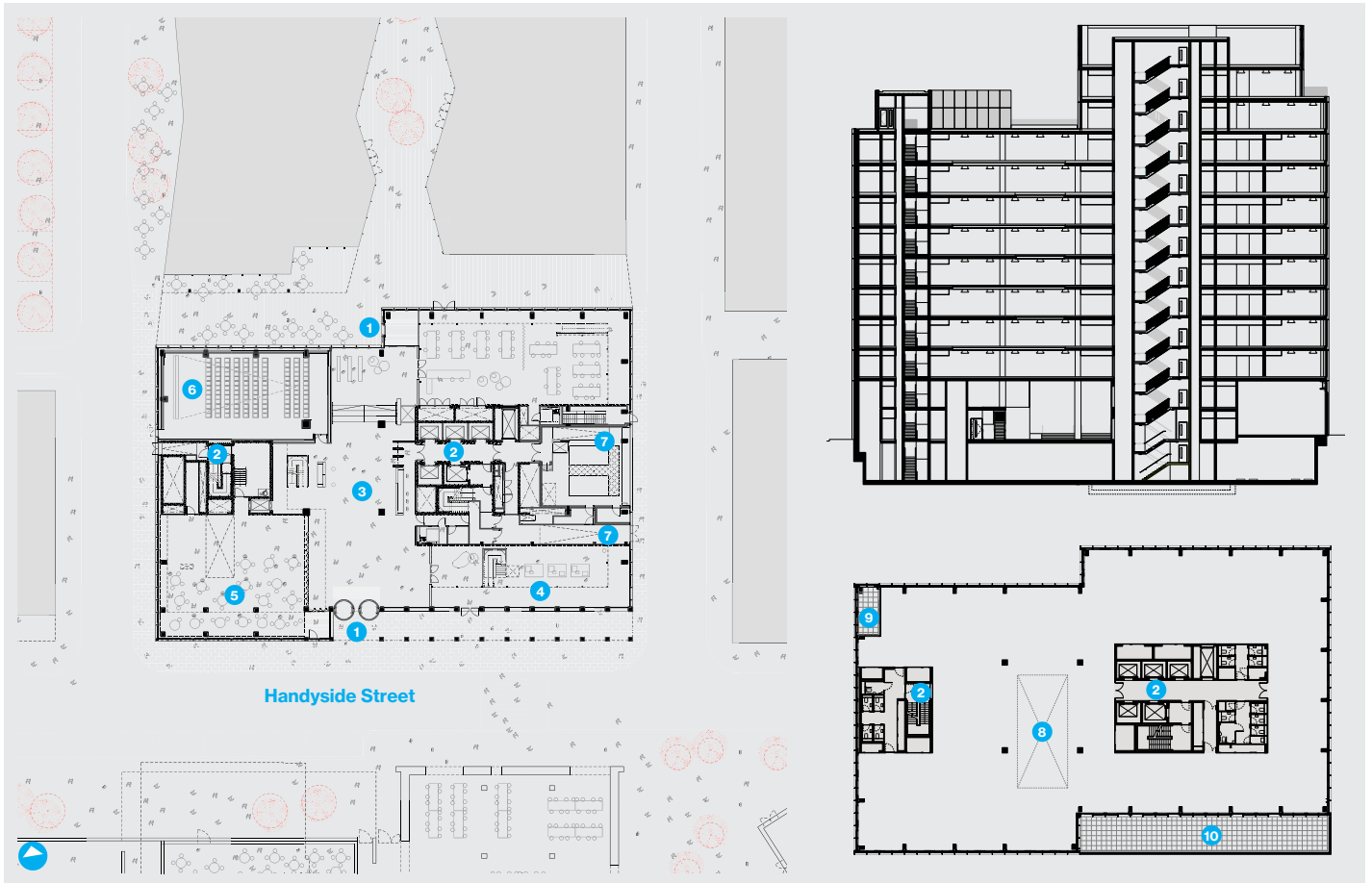


**Key**

- 1 Entrance
- 2 Core
- 3 Forum/reception
- 4 B1 unit
- 5 Restaurant
- 6 Cinema (screen one)
- 7 Loading bay/cycle spa entrance
- 8 Soft spot
- 9 Inboard balcony
- 10 External terrace

**Below**  
Ground floor, typical office floor and long section.



**Right**

The facade design draws inspiration from the “lightweight, efficient engineering of refined metal structures, evident in [nearby] glazed roofs and gasholder columns”, says the architect. A 1.5-metre grid allows “highly flexible subdivision of the internal space”. The finish is a durable powder coating with a metallic finish, to form a protective layer and create a soft sheen.

**Key**

- 1 Extruded PPC aluminium fin
- 2 Insulated PPC aluminium spandrel panel
- 3 Fixed glazing
- 4 Extruded aluminium mullion
- 5 Precast concrete column

