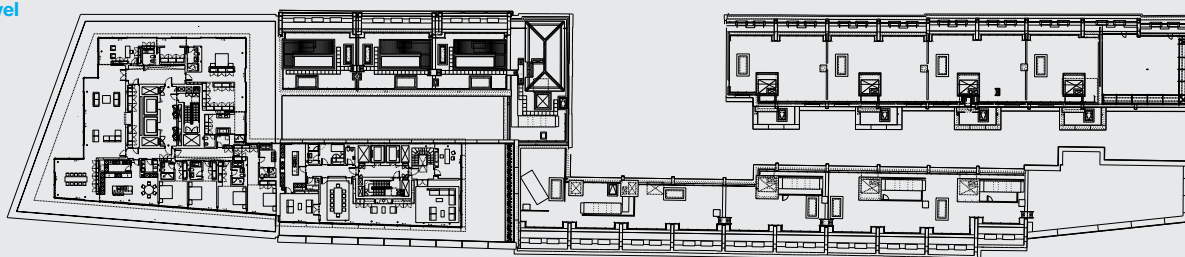
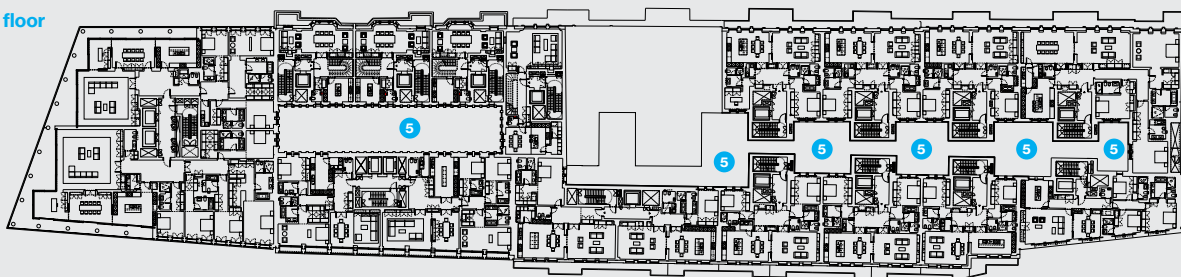


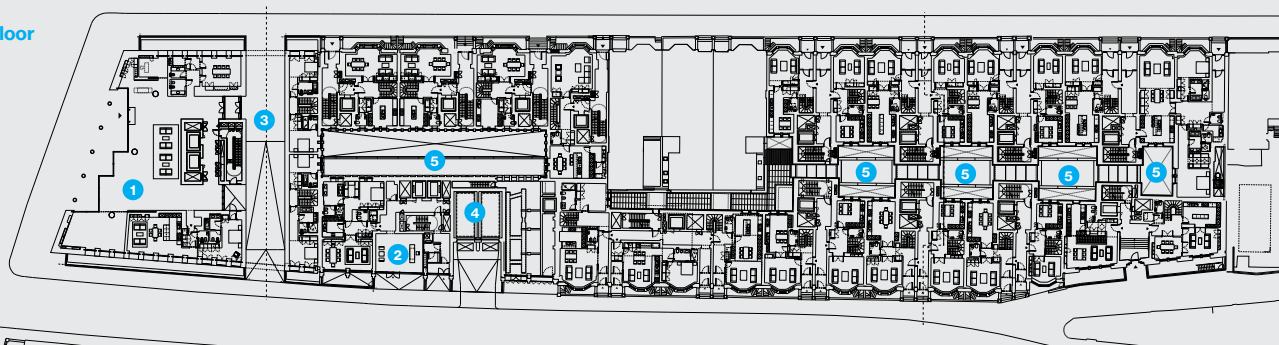
Penthouse level



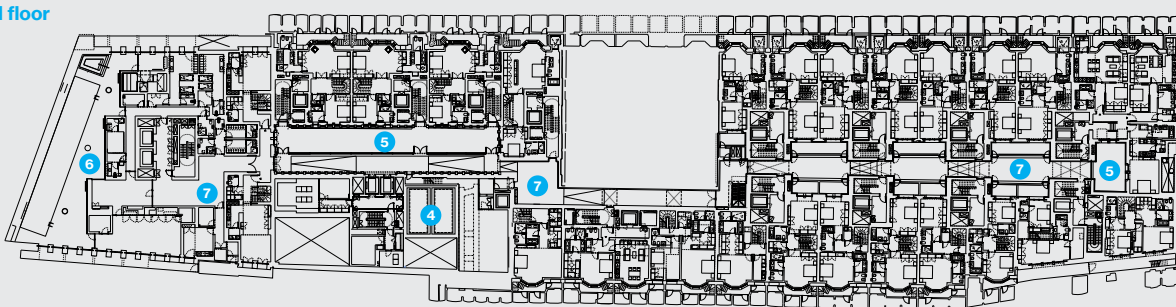
Typical upper floor



Ground floor



Lower-ground floor

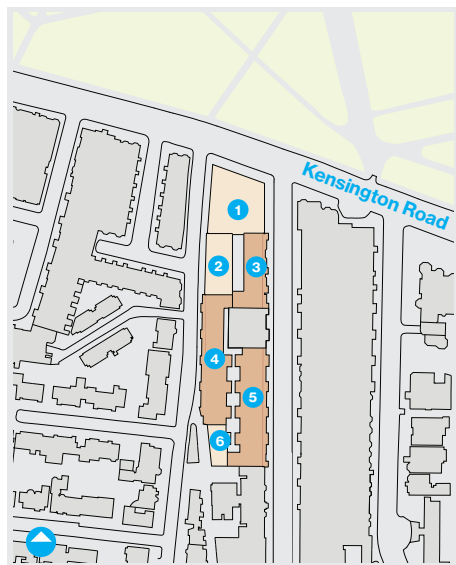


Above

New interiors were planned with the rhythm of existing fenestration in mind, and existing front doors maintained.

Key

- 1** Kensington Road building reception
- 2** Victoria Road building reception
- 3** Porte cochère
- 4** Car lift to basement parking
- 5** Courtyard
- 6** Leisure centre
- 7** Link corridor



Key

- 1 Kensington Road Building
- 2 Victoria Road Building
- 3 De Vere Gardens Building — north
- 4 Edinburgh Road Building
- 5 De Vere Gardens Building — south
- 6 Canning Passage Building

Above

Location plan. The block-sized scheme, facing the south-west corner of Hyde Park, replaces the Kensington Palace Hotel — a nineteenth-century former mansion block on the northern part of the site — and the Kensington Park Hotel, which largely constituted the southern part, occupying Victorian former townhouses whose facades have been retained and restored.

Above centre

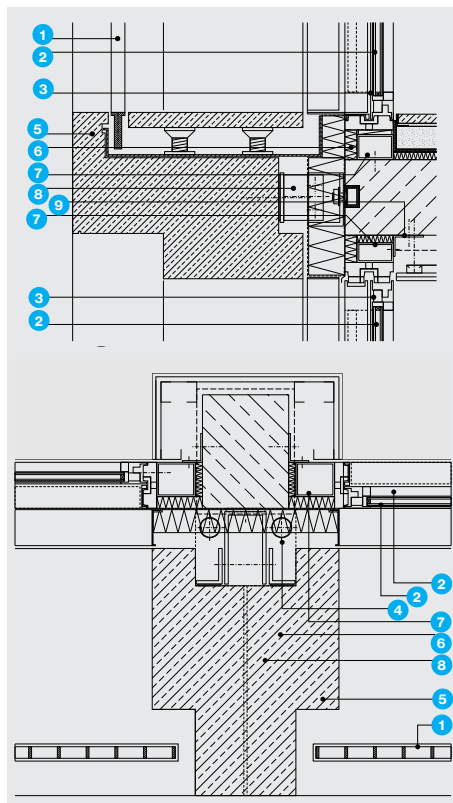
Detail plan and section of column and balcony on Victoria Road facade. Small recess details to column and lintel edges emphasise the primary beams, creating a layer of shadowing.

Above right

Section through 'porte-cochère'.

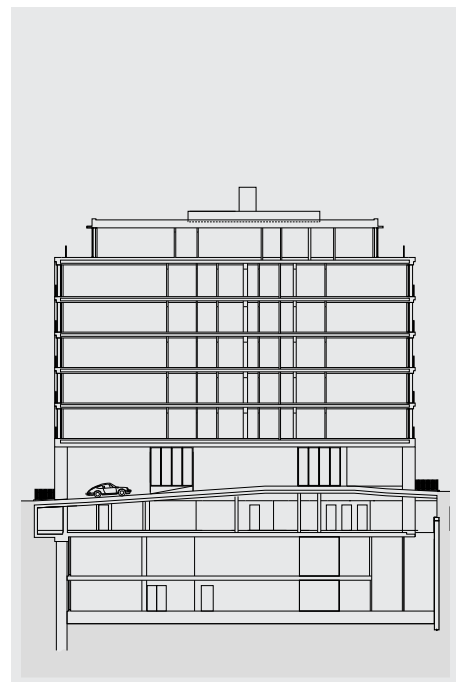
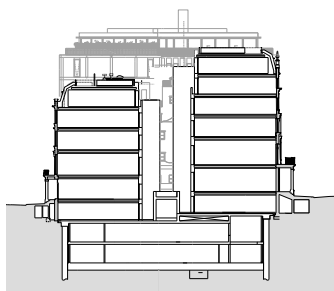
Right

At the centre of the development, a series of internal courtyards clad in a matte glazed white brick provide surrounding flats with natural light. An internal link corridor that runs the length of the development at lower-ground level takes the form of a glazed cloister at the northern end of the site, with views onto a planted courtyard.



Key

- 1 Bronze balustrade
- 2 Clear double-glazed unit
- 3 Bronze sliding door frame
- 4 Facade drainage
- 5 Precast reconstituted stone
- 6 High performance insulation
- 7 Facade system support profile
- 8 Precast element support bracketry
- 9 Facade system fixing profile



Project team

Architect
David Chipperfield Architects
Design team
Louise Dier, Oliver Ulmer, Ryan Theodore, Martin Reynolds, Andrew Hapgood, Elena Dueñas Lete, Nick Beissengroll, Ryan Butterfield, Jochen Glemser, Tom Herre, Nick Hill, Kelvin Jones, Renato Pimenta, Jana Schwalb
Conservation architect
Julian Harrap Architects
Structural and facade engineer
Buro Happold
MEP, fire, acoustics and security
Hoare Lea
Quantity surveyor
Gardiner & Theobald
General contractor
Sir Robert McAlpine
Client
De Vere Estates

Selected suppliers & subcontractors

Precast reconstituted stone cladding
Techrete
Portland stone cladding
Grants of Shoreditch
Bronze balustrades
Lee Warren
Glazing, sliding doors
Schneider
Bricwork
Lyons & Annoot
Stone flooring
Szerelmey, MegaMarble
General joinery
Ruddy Joinery
Facade restoration
PAYE