

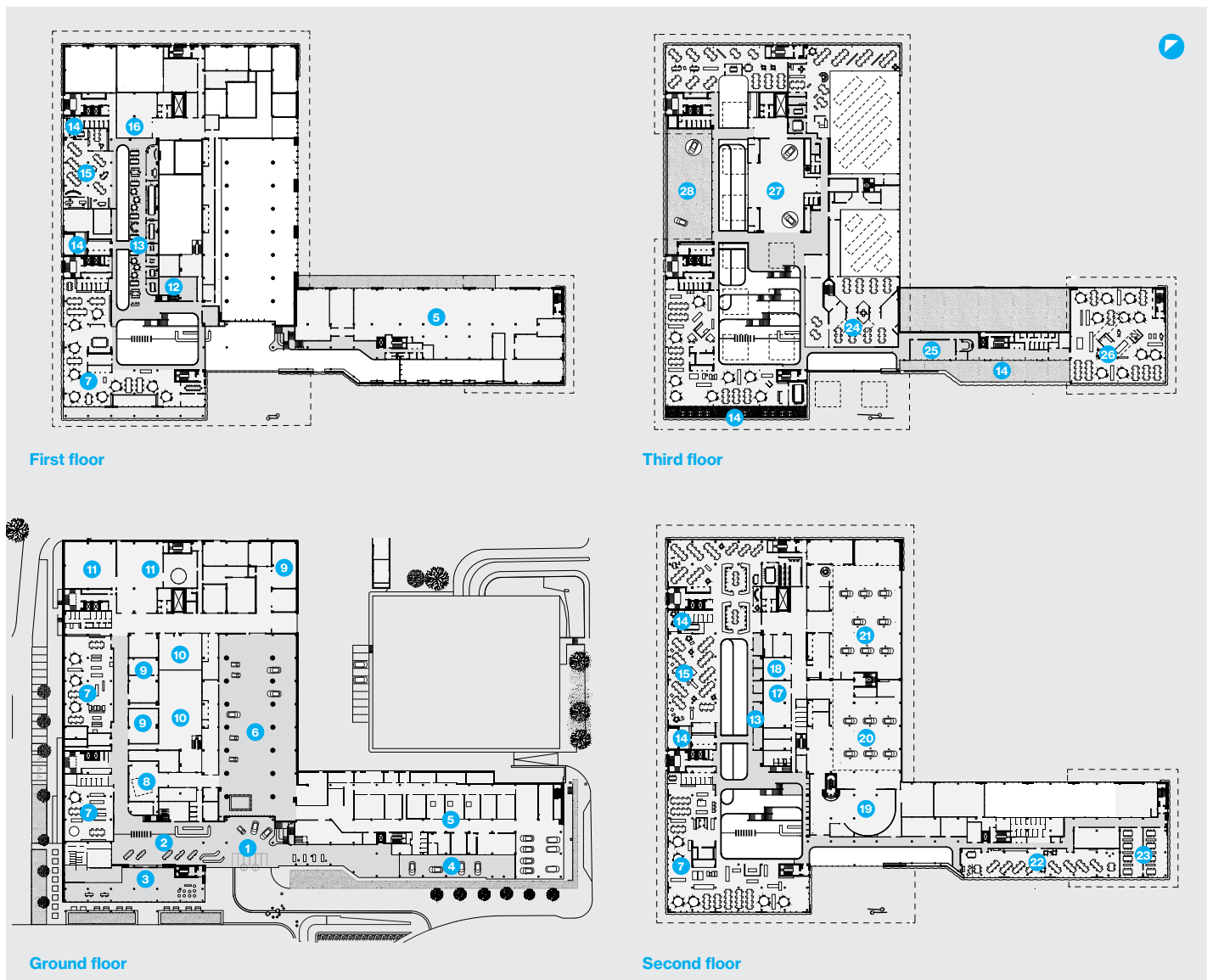
Key

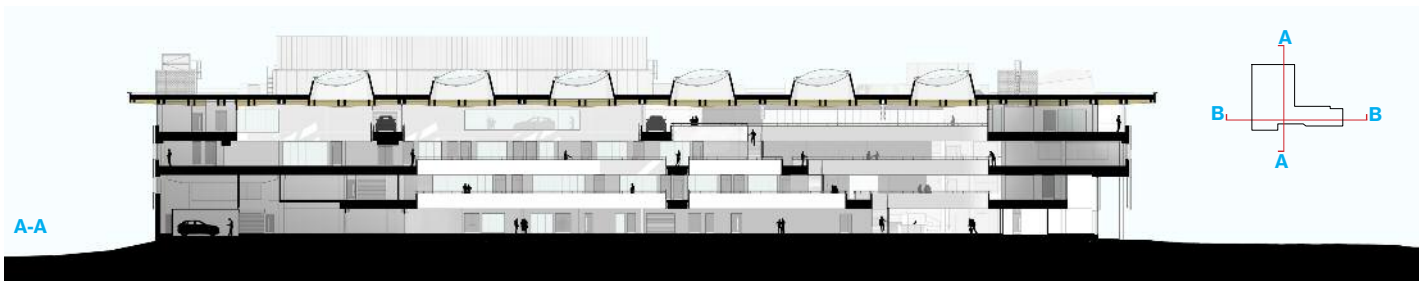
- 1 The NAIC
- 2 University House
- 3 Multi-storey car park
- 4 Mathematical Sciences
- 5 International Manufacturing Centre (WMG)
- 6 International Digital Laboratory (WMG)



Key

- 1 Entrance/exhibition
- 2 Reception
- 3 Cafe
- 4 WMG Student Projects
- 5 Advanced Propulsion Research Lab
- 6 Engineering Hall
- 7 Jaguar Land Rover research office
- 8 Drive-in simulator
- 9 Jaguar Land Rover/TMETC labs
- 10 Jaguar Land Rover/TMETC VR
- 11 Workshops
- 12 Jaguar Land Rover reception area
- 13 Collaborative Hub
- 14 External terrace
- 15 TMETC research office
- 16 TMETC clay store
- 17 Hard modelling
- 18 Clay loading store
- 19 Jaguar Land Rover future showroom and review
- 20 Jaguar Land Rover design hall
- 21 TMETC design hall
- 22 WMG project space
- 23 WMG lecture room
- 24 Jaguar Land Rover design studio
- 25 Board room
- 26 Jaguar Land Rover project space
- 27 Showroom
- 28 Viewing garden





- Reception/cafe/exhibition
- Collaborative hub
- Engineering hall
- Propulsion research lab
- WMG student projects
- Research offices
- Design halls
- Showroom
- Viewing garden

