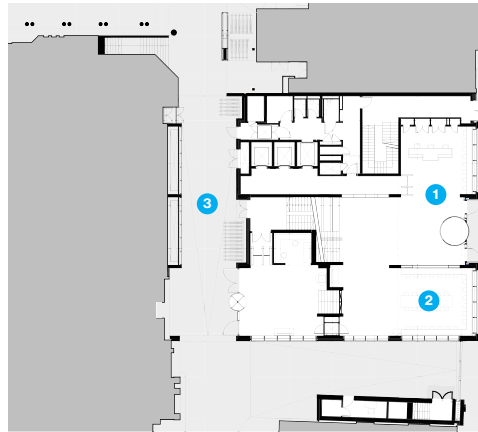
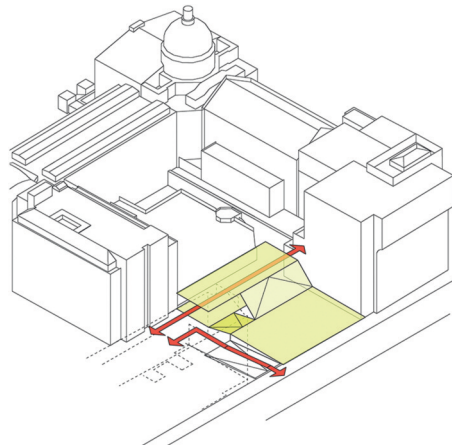
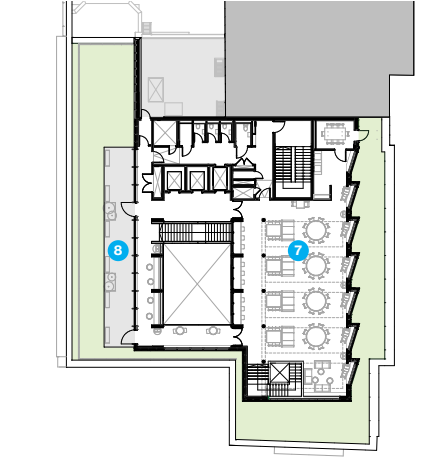


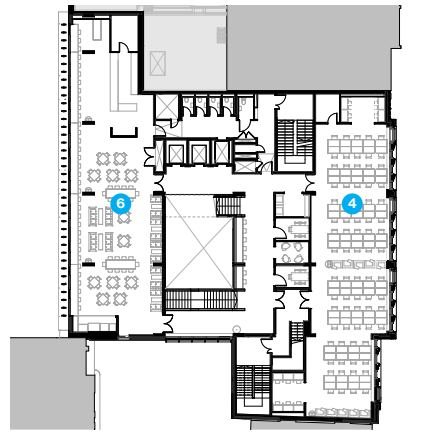
Mezzanine floor



Ground floor



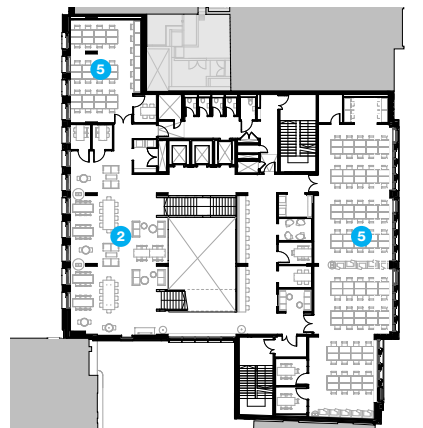
Fourth floor



Third floor



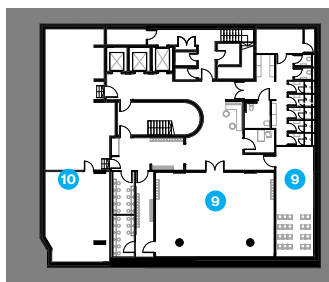
Basement 1



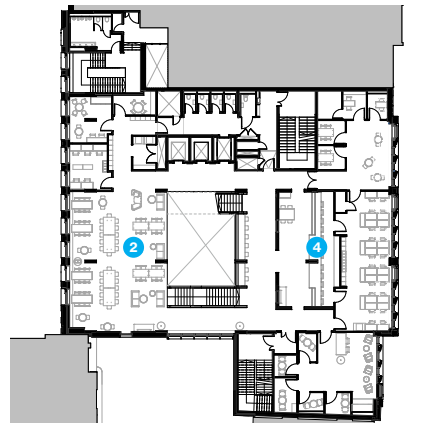
Second floor

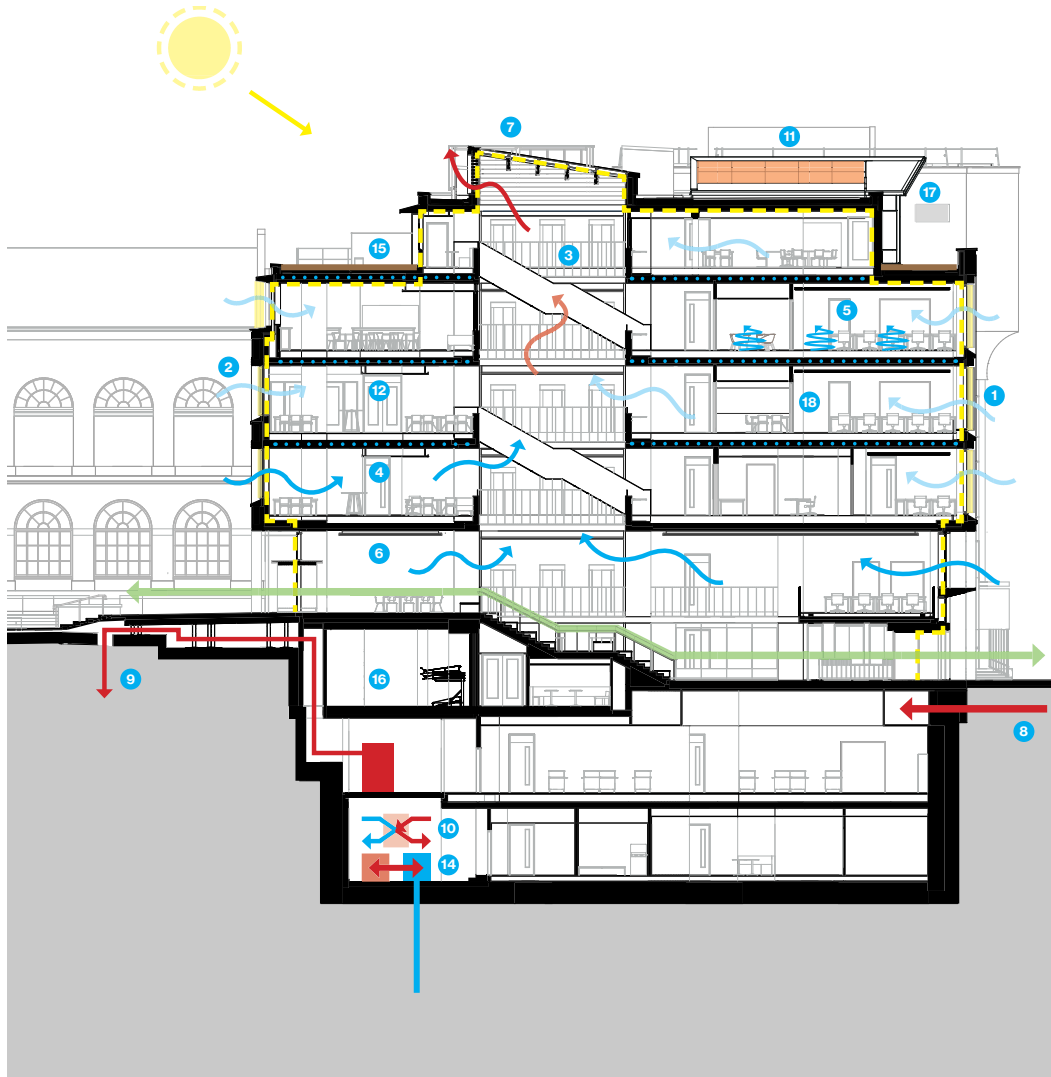
Key

- 1 Reception
- 2 Open study space
- 3 Refectory route
- 4 Student enquiries
- 5 Quiet study room
- 6 Cafe
- 7 Social study room
- 8 External terrace
- 9 Quiet contemplation room
- 10 Plant room



Basement 2





Key

- 1 Optimised louvred facade
- 2 Super-insulated airtight fabric
- 3 Cross and stack ventilation
- 4 Mixed-mode ventilation
- 5 Demand controlled displacement ventilation
- 6 Temp/CO2 monitoring
- 7 Natural and mechanical ventilation with heat recovery
- 8 UCL district heating for hot water
- 9 Replacement plant for ACBE Lab
- 10 Low-energy AHUS with heat recovery
- 11 Roof-level PV array
- 12 Embedded cooling pipe in soffit
- 13 120m borehole into aquifer
- 14 GSHP for low grade heating
- 15 Brown roof
- 16 Campus cycle parking
- 17 Bird and bat boxes
- 18 Intelligently task lighting