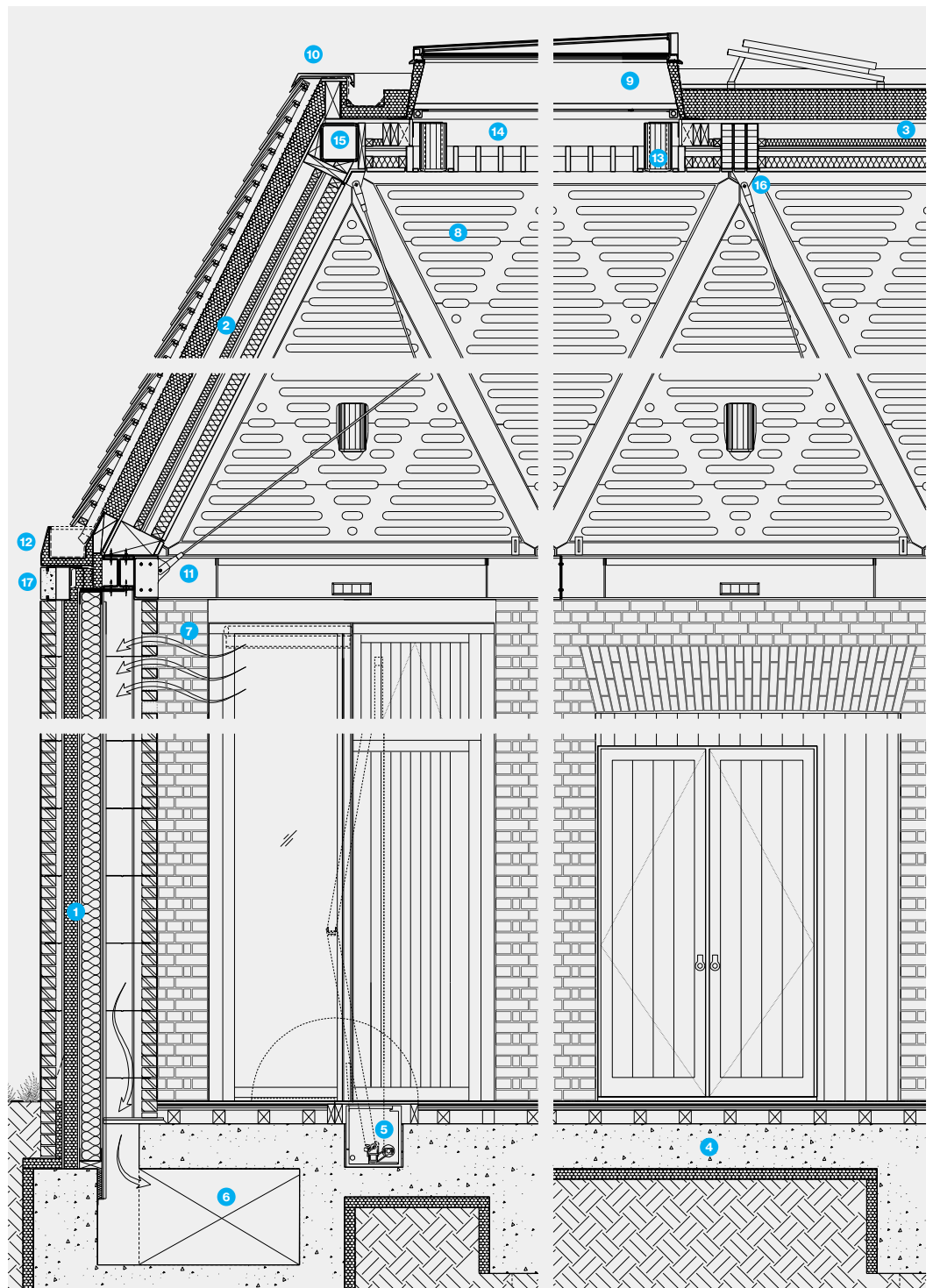


Key

- 1** External handmade brick, cavity, rigid insulation, breather membrane, cement board, Metsec framing system, mineral wool, cement board, vapour control layer, cavity, internal Charnwood brick
- 2** Clay tiles on battens and counter battens, breather membrane, rigid insulation, vapour control layer, backing board, acoustic cavity, mineral wool, acoustic monolithic plasterboard ceiling, oak veneer acoustic panel
- 3** Waterproofing layer capping set and underlayer, PIR tapered insulation, vapour control layer, plywood board, acoustic cavity, mineral wool, acoustic monolithic plasterboard ceiling, oak veneer acoustic ceiling panels
- 4** Oak timber flooring, concrete slab, tanking membrane, under slab insulation, blinding
- 5** Retractable projector screen
- 6** Extract ventilation plenum
- 7** Hit and miss brickwork for ventilation extract
- 8** Oak veneer slotted ceiling panel
- 9** Rooflight system with extruded aluminium frame, acoustic glazing and integrated black-out blinds
- 10** Pressed aluminium edge flashing with lighting tape and copper angle filler
- 11** Steel channel with bolted connections for Macalloy tension rod system
- 12** PPC fabricated aluminium gutter
- 13** Stage light fitting
- 14** Solid white oak shading grille
- 15** Steel ring beam
- 16** Flitch beam
- 17** Reconstituted stone lintel



Key

- 1** Main entrance
- 2** Auditorium
- 3** Rehearsal room
- 4** Cloakroom/bar
- 5** Music classrooms
- 6** Music office
- 7** Exhibition
- 8** Porter's lodge
- 9** Singing room
- 10** Staff room
- 11** Caretaker's flat

